

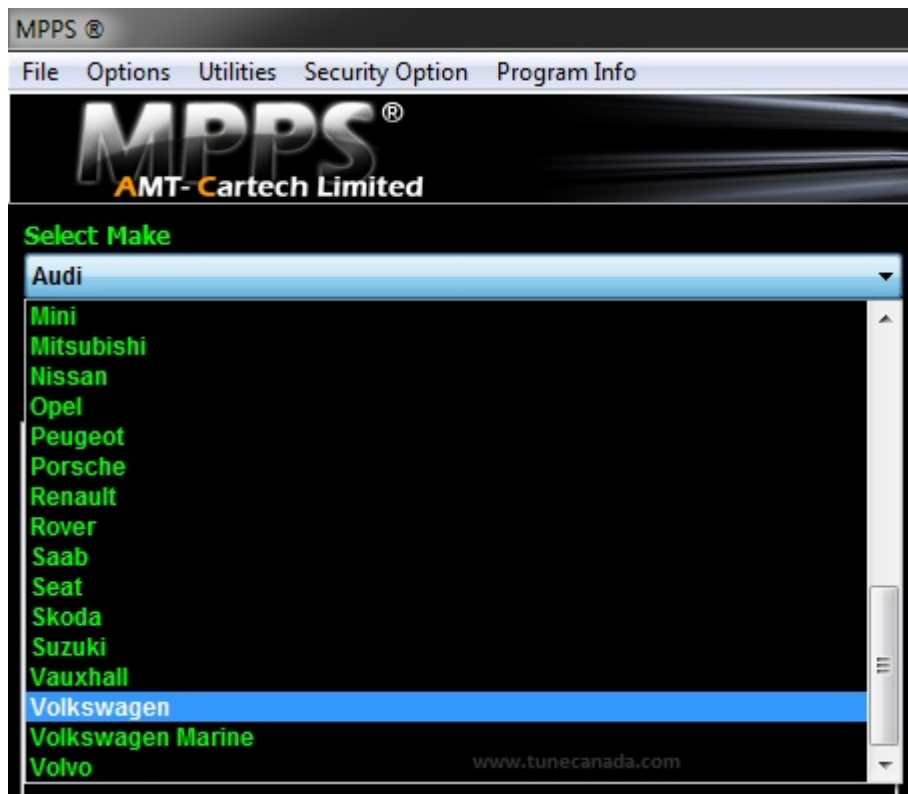
# MPPS ECU Flashing Reading Instructions

This following information describes in detail the process for Read ecus with the MPPS Cables.

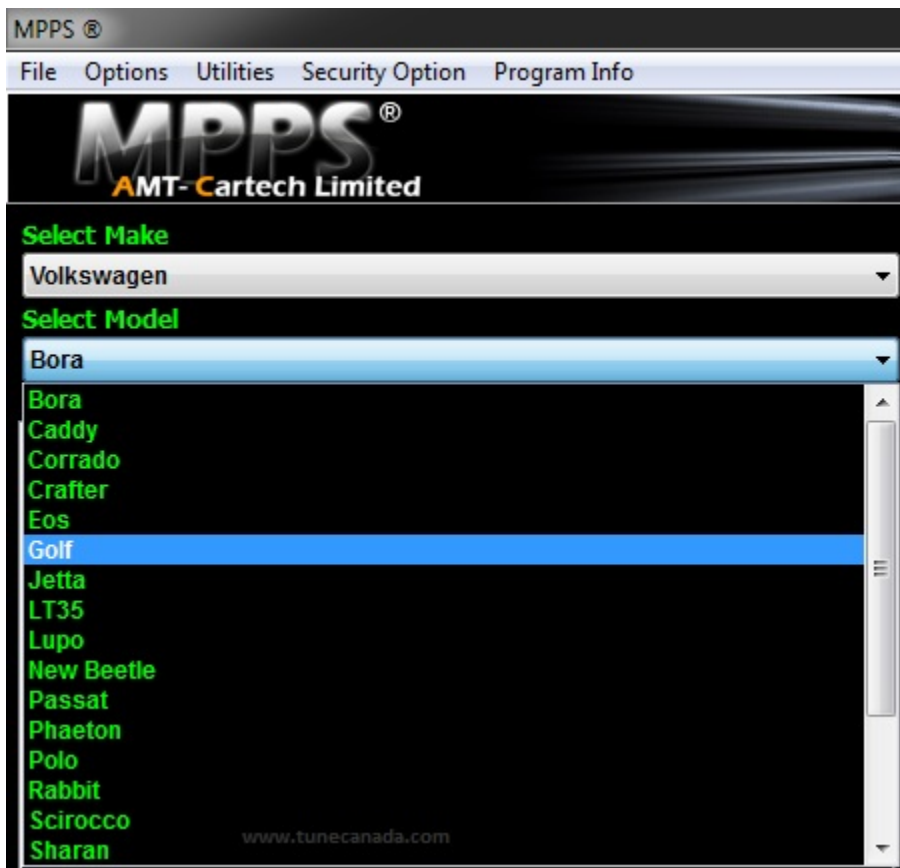
**Example Vehicle:**

**VOLKSWAGEN -> GOLF IV -> ME7.5 -> 1.8Turbo**

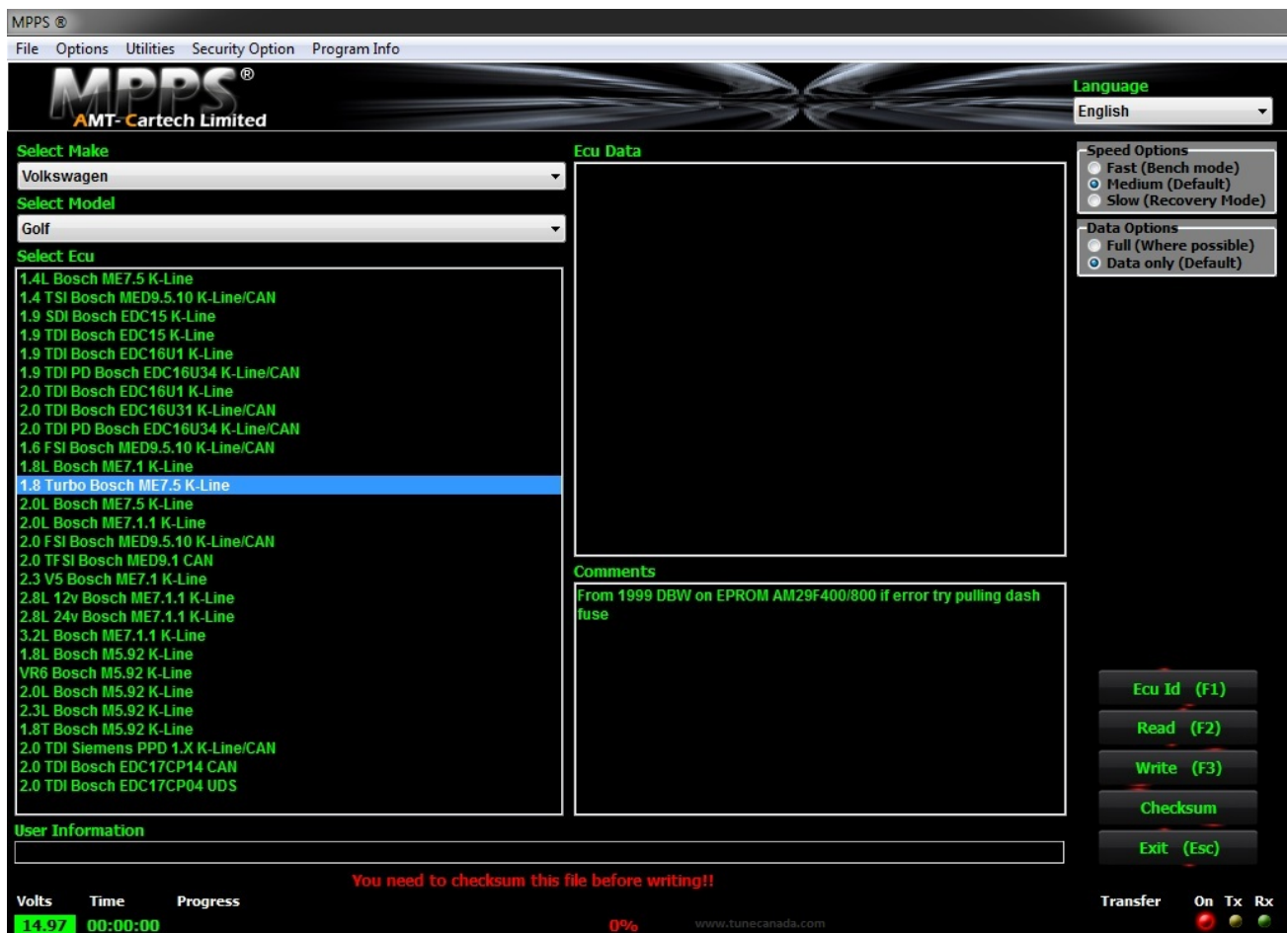
Select the Make from the list.



Next Select the Model from the list.



Next Select the ECU TYPE from the List



Please read the comments section.

For example if this ECU was read and the flash was remapped you must checksum in you tuning software. Alternatively if your have not purchased checksuming of the ecu most remapped files can be checksumed by MPPS. The note on this car indicates that if the immobilizer in the dashboard is blocking flashing access to remove the Dashboard (Kombi) FUSE.

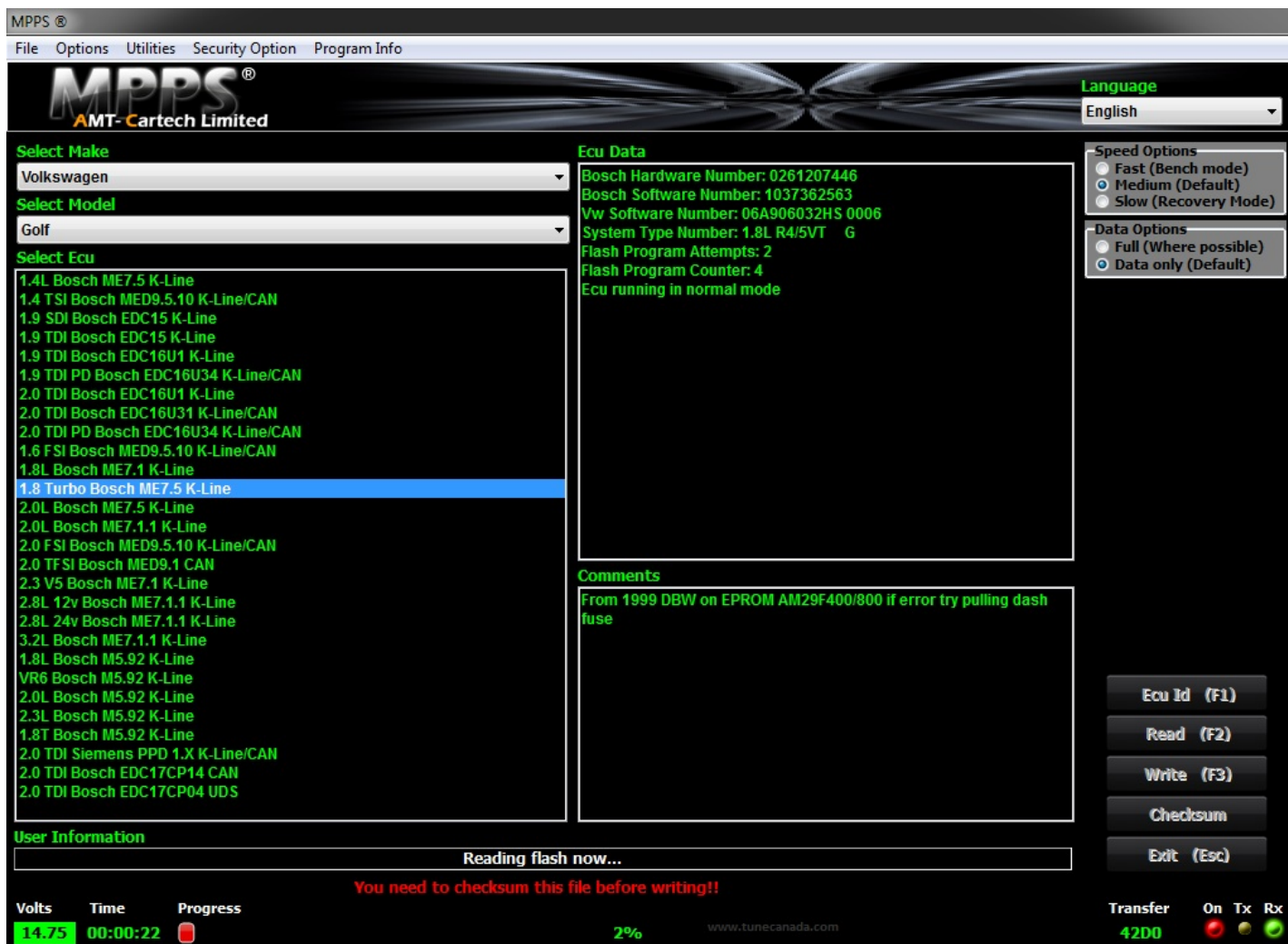
PAY Close attention to the ECU type. If the ECU type is not found you can likely find it under another model. For example selecting Audi -> A4 -> 1.8 Turbo Bosch ME7,5 selection could also be used to read this ECU as the hardware is the same.

## ECU Identification

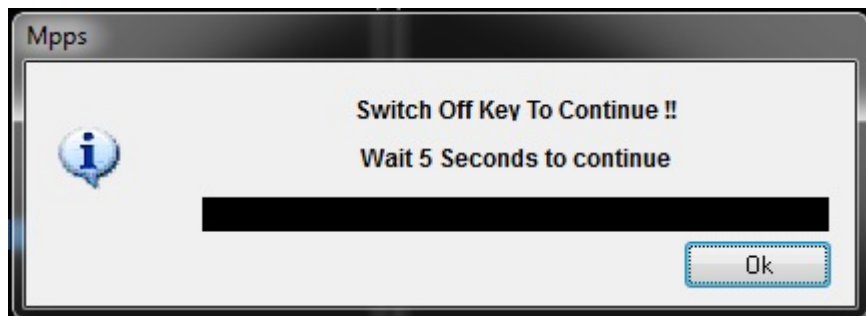


Press "Ecu ID" to id the ecu. MPPS will be its best to perform a proper ECU ID. In some cases due to variations in data structure the exact versions are not shown even on a readable ecu..

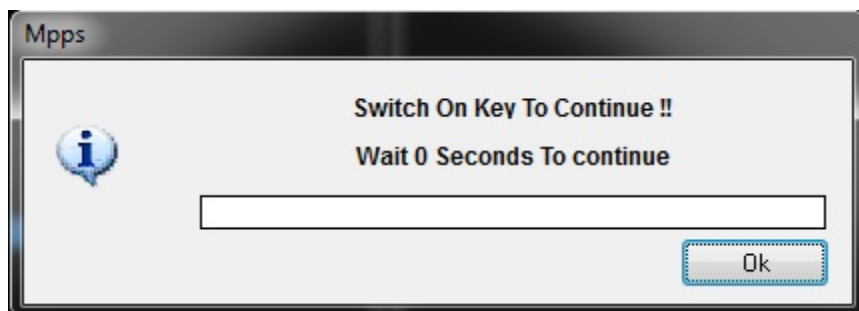
Next Press the "Read" Button. MPPS will now attempt to read out the ecu data.



Upon successfully reading the ECU. MPPS will prompt you for the location to save the file name.



Continue to follow the instructions and switch off the key.



Turn on the key and press continue.

**MPPS will perform any post reading requirements if needed by that ECU model.**